

Niedersächsische Landesschulbehörde

President
Ulrich Dempwolf

Head Office
Auf der Hude 2
21339 Lüneburg
Tel.: 04131 15-2500
Fax: 04131 15-2510

Press Office
Auf der Hude 2
21339 Lüneburg
Tel.: 04131 15-2005
Fax: 04131 15-2510
pressestelle@nlschb.niedersachsen.de

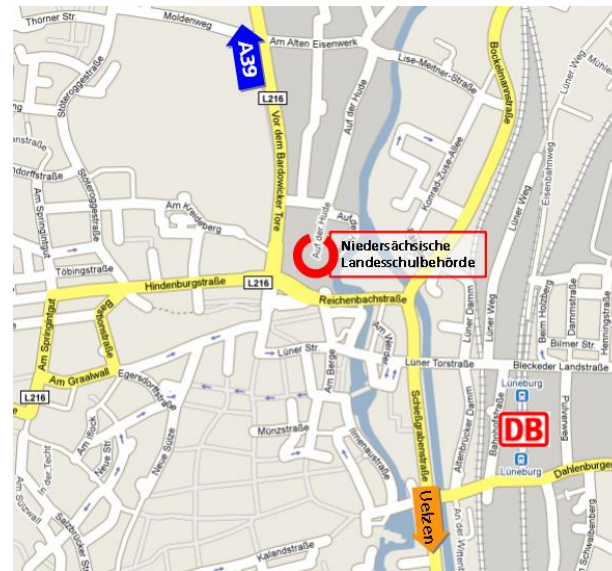
Regionalabteilung Braunschweig
Wilhelmstr. 62-69
38100 Braunschweig
Tel.: 0531 484-0
Fax : 0531 484-3220
poststelle-bs@nlschb.niedersachsen.de

Regionalabteilung Hannover
Am Waterlooplatz 11
30169 Hannover
Tel.: 0511 106-0
Fax: 0511 106-2607
poststelle-h@nlschb.niedersachsen.de

Regionalabteilung Lüneburg
Auf der Hude 2
21339 Lüneburg
Tel.: 04131 15-0
Fax: 04131 15-2910
poststelle-lg@nlschb.niedersachsen.de

Regionalabteilung Osnabrück
Mühlenschweg 8
49090 Osnabrück
Tel.: 0541 314-01
Fax: 0541 314-400
poststelle-os@nlschb.niedersachsen.de

How to find us



... by car

- A7 (from Hannover):

Take the A7 direction of Hamburg. Leave the motorway at exit Soltau-Ost. At the junction turn right onto the B 71. After about 2.5 km turn onto the B 209. Drive through Amelinghausen and Drögenindorf onto the B 4 dual carriageway. Leave the dual carriageway at exit Lüneburg Nord (Bardowick, Ochtmissen). At the junction turn left into Hamburger Straße. After about 2 km turn left at the traffic lights.

- A1 (from Bremen / Hamburg):

Take the A 1 to Maschener Kreuz. Follow the A 250 and continue to the exit Lüneburg Nord. At the junction turn right into Hamburger Straße. After about 2 km turn left at the traffic lights.

Parking facilities can be found in front of the building.

... by Public transport:

Lüneburg is on the main Hamburg – Hannover rail connection. The Education Authority is about 10 minutes walking distance from the railway station. When you leave the station keep to the right (Bahnhofstraße). At the end of Bahnhofstraße turn left into Lünertorstraße. At the end of Lünertorstraße, go straight on at the traffic lights. Keep to the right into Reichenbachstraße and then go straight on at these traffic lights. After about 250 m you will see the Education Authority building on the right-hand side.

Imprint

Landesschulbehörde

Press Office

Tel.: 04131 15-2005

Fax: 04131 15-2510

poststelle@nlschb.niedersachsen.de

www.landesschulbehoerde-niedersachsen.de

Last update: May 2011

photos: www.stockxpert.com

Landesschulbehörde



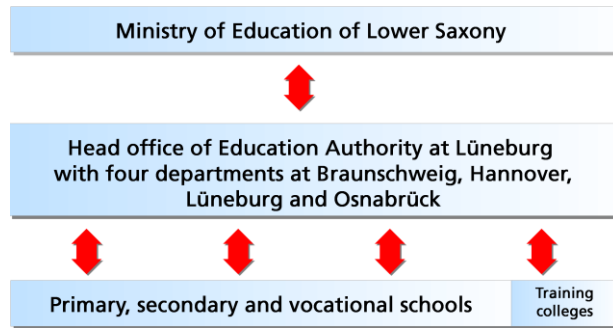
Niedersächsische Landesschulbehörde

Education Authority of Lower Saxony



Niedersachsen

Organisation



The Education Authority of Lower Saxony with its head office in Lüneburg and four regional departments in Braunschweig, Hannover, Lüneburg and Osnabrück supervises all of Lower Saxony's schools, advises and supports them and provides them with staff. In addition, necessary funds are allocated within the budget and additional benefits are granted.

Responsibilities of the Education Authority of Lower Saxony

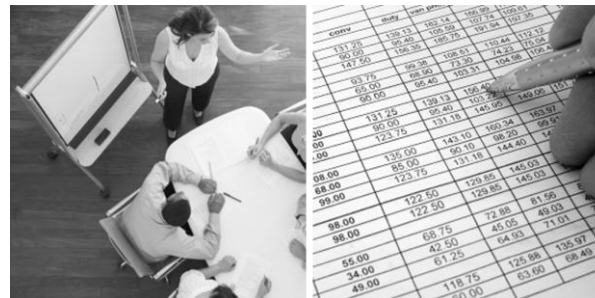
- Supervision of primary, secondary and vocational schools
- School organisation, legislation and budget
- Provision of staff and teacher particulars
- Advice and support for all school types and teachers' training colleges
- Educational Psychology

School Statistics in Lower Saxony

- about 3,100 primary and secondary
- about 400 vocational schools
- 51 teachers' training colleges
- about 94,000 teaching staff
- nearly 1 million pupils in primary and secondary schools
- about 285,000 students in vocational schools

Personnel in the Lower Saxony Education Authority

- In total there are 670 personnel
- Subject advisors and educational psychologists
- Departments for school legislation, organisation and budget issues
- Administrative staff for internal organisation
- Advisory and support teachers for part and full-time postings



Website



www.landesschulbehoerde-niedersachsen.de

- Information System for parents, pupils, teachers and schools
- Information on the Education Authority of Lower Saxony
- Special website: information on support and training
- Support for headteachers
- Range of services for schools

On its website the Lower Saxony Education Authority provides general information on all kind of school issues for every interested person. In addition it includes a password protected area with special information for teachers and schools. This area is used to provide legal support, organisational issues and to allow access to forms and printouts.